

FUJIRYOKI

Massage chair EC-3900



Highly function
easier to operate

CYBER-RELAX

サイバーリラックス

Made in Japan



Highly-functionality of EC-3900

極メカBasic

KIWAMI MECHA BASIS

3D point navi-system +
29 types of
various knead technique.
10 types of auto course.

5 levels of strength

AIR MAGIC

High speed supply
and exhaust unit
3 types of air option

3 levels of strength

Truly easy to operate, highly-functional massage chair

Under the concept of "easier to use the high-functionality", the flagship model massage chair has been developed, equipped with selected technology and function of FUJIIRYOKI.

Could be used longer
as the easy way to operate.

The ideal massage chair
is founded here.



Meet the wide demands of the massage

きわみ **極メカBasic**

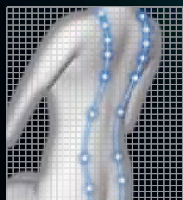
KIWAMI MECHA BASIS

5 level of strength
 (Maximum ejection volume about 10cm)

Equipped with KIWAMI MECHA BASIS to accommodate wide range of human needs for massage chair. Successive Fujiiryoki's individual KIWAMI MECHA with 2 balls give ideal and preferred custom-made massage for each age, body type.

3D point navi-system+

The detecting system to find complicated human body's line. Automatically start the program after finishing the body line of the user by ideal strength and the programs.

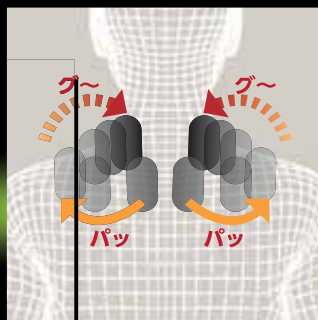


29 types of various knead art.

In addition to basic movement of "KNEAD", "TAPPING", 4 different and various movement are equipped. Enjoy the greater diversity massage.

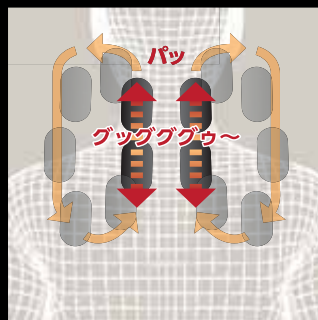
5 + 4 × 4 + 8

Basic	Basic x 4 mode		Dedicated technique	
<ul style="list-style-type: none"> Knead up Knead down Tapping Wave Rolling 	<ul style="list-style-type: none"> Knead up Knead down Tapping Wave 	<ul style="list-style-type: none"> 手もみ ループ 3D ストレッチ 	<ul style="list-style-type: none"> Shoulder-knead Waist knead shoulder-tapping Waist tapping Neck flex Waist's 3 Bladebone Wais :su 	



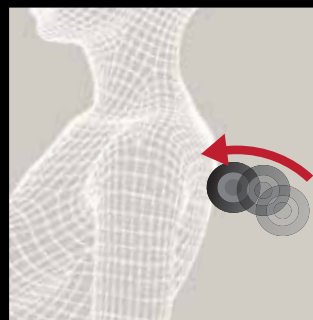
Hand knead

Gripping slowly and release quickly such as human hand massage.



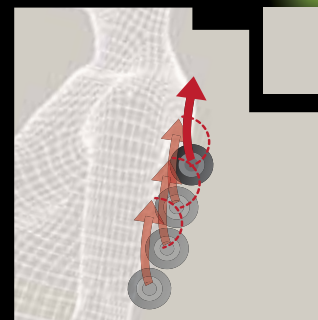
Loop

Up/down movement of basic kneading, tapping. Wide range of massage



3D

Each technique with sticking out the knead ball.



Stretch

Combination of up/down movement of each technique to stretch body.

Comfortable stimulation

AIR MAGIC

Air magic for providing comfortable stimulation. Equiped with high speed pressing/releasing action of airbag, which holds whole body and gives comfortable air massage.

3 levels of strength on upper body/Lower body

3 levels of strength on foot/calf



Shoulder massage

Wide range massage from upper arm to shoulder blade

Arm air massage

Massage from lower arm to fingertip

Waist/Lower body massage

Wide range massage from pelvis to back of knees.

Foot air massage

Repeat of press/release massage holding whole calf

Sole massage

Stimulate sole of the feet by shiatsu ball with holding whole calf

3 air option

Pelvis therapy

Intensive massage for pelvis with other program



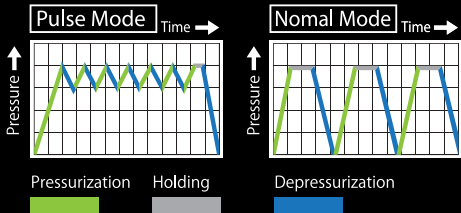
Hold and foot stretch

Fix thigh firmly and move the feet down for stretch



PULSE MODE

A rhythmical, human-like massage which consists of high speed repetition of pressurization → holding → depressurization which helps promote blood circulation.



Natural fit function meets the demands of wider range of human body's height.

Natural fit function for every human body size. 2 steps of spring slide.



Sole heat

Warmig up massage by the heater function



Light guidance for operation

“Useful highly function”

with LED remote

Equip the remote with
Highly function. Easy to operate
auto, manual course for any user
by LED display.



Ideal massage for each user

10 types of auto course

Equipped with 5 basic course,
5 harder KIWAMI MECHA course.
When push the KIWAMI
mode button, each 5 course
change to KIWAMI course.

5 × 2

Basic course

1. Whole body rejuvenate
2. Shoulder rejuvenate
3. Waist rejuvenate
4. Whole body stretch
5. Whole body relax

KIWAMI MECHA course

6. Whole body KIWAMI rejuvenate
7. Shoulder KIWAMI rejuvenate
8. Waist KIWAMI rejuvenate
9. Whole body KIWAMI stretch
10. Whole body KIWAMI relax

CYBER-RELAX MASSAGE CHAIR EC-3900

Specifications

- Measurements(Approx.) :
[When the footrest is stored] W820 x D1250 x H1250(mm)
[In the reclined position] W820 x D2050 x H770
- Minimum width before assembly(Approx.): W640(mm)
- Reclining angle(Approx.): 120~170 degrees
- Weight(Approx.): 75kg
- Voltage: AC100V, 120V, 220~240V (50/60Hz)
- Power consumption: 120W(Heat: 10W)
- Rated time: 30min
- AS-860(base domestic Japan model)
- Medical Device Licence Number: 225ABBZX00187000



BK (Black)



CS (Beige)

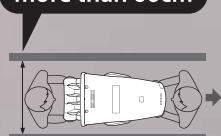
Removal back pad and pillow

Both are easy to remove and maintain



[Installation width]

more than 66cm



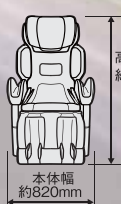
[Dimensional Drawing]

正面

側面

リクライニングしていないとき

リクライニングしているとき
(脚部を伸ばしたとき)



効能・効果

あんま・マッサージの代用 ●疲労回復 ●血行促進 ●筋肉の疲れをとる ●筋肉のコリをほぐす ●神経痛、筋肉痛の痛みの緩解



Quality relaxation for your space



Safety
Precautions

- Please read the [User Manual] before use and use this product properly.
- The following persons are strongly recommended not to use this product. Certain physical abnormalities may occur.
 - Persons prohibited from receiving a massage by a medical physician, for example those suffering from thrombosis, severe aneurysm, acute varicose veins, various kinds of dermatitis and skin infections (including inflammations of subcutaneous tissue), etc.
- The following persons must consult a medical physician before using this product as certain physical abnormalities may occur.
 - Persons with malignant tumors. ● Persons who are pregnant or menstruant, persons thought to be pregnant, or those immediately after childbirth.
 - Persons who suffer from paresthesia related to peripheral circulatory disturbance due to diabetes etc. ● Persons with body temperature exceeding 38°C (when strong acute inflammation symptoms, malaise, chills, blood pressure fluctuations are observed, when debilitated) ● Persons with wounds in treatment areas ● Persons who suffer from acute illness (dolorific) ● Persons who suffer from osteoporosis ● Persons who suffer from spinal column fractures ● Persons suffering from inflammation such as sprains and muscle strains ● Persons who suffer from paresthesia ● Persons who suffer from heart trouble ● Persons using a medical electronic device embedded in the body such as a pacemaker susceptible to electromagnetic disturbances
 - Persons with abnormalities in the spine ● Persons who suffer from anemia ● Persons who need to massage a part of the body treated medically in the past
 - Persons who need bed rest ● Persons receiving medical treatment ● Persons who feel an abnormality on the body other than the above
- Please do not allow unattended children or persons unable to declare their own intentions to use this chair. Please do not allow infants near the chair.

● Concerning the use of this catalogue

- The material contained in this catalogue are based on domestic Japanese Pharmaceutical Affairs Laws. The claims made in this catalogue may not be valid or relevant in your country.
- Fujiiryoki will not be held responsible for the use of this catalogue outside of Japan, and all responsibility will lie with the user in such circumstances.
- Product images shown may differ from actual product appearance.
- Designs and specifications are subject to change without notice.

FUJIIRYōKI

Fuji Medical Instruments Mfg. Co., Ltd.
Overseas Sales Department

14th Floor, Oe Building, 1-22, Noninbashi 1-chome, Chuo-ku, Osaka, 540-0011, Japan
Tel: +81-6-4793-0745 Fax: +81-6-4793-0781