

■Trouble shooting(JP-1100US)

●Precautions for repair or exchange

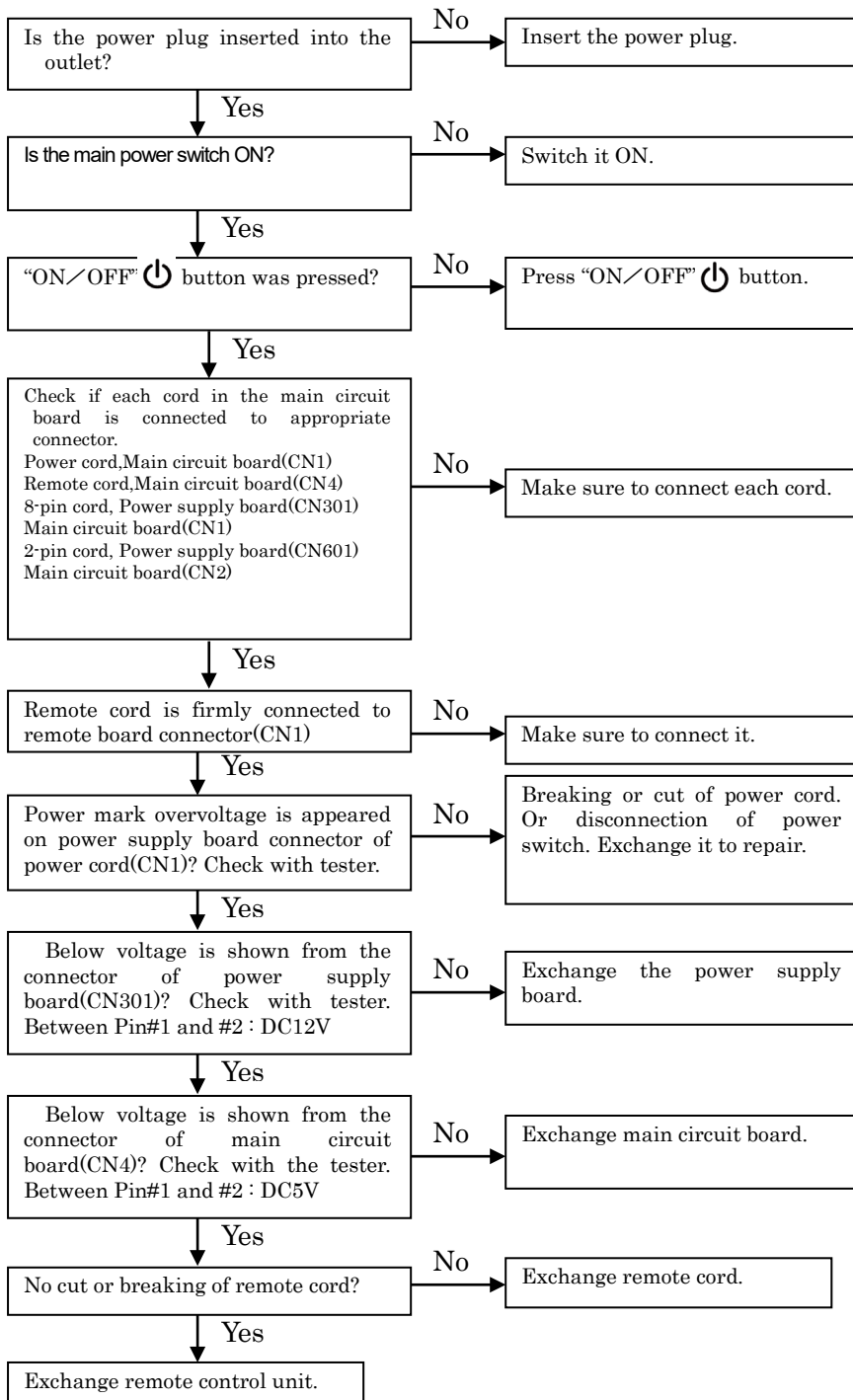
a. Make sure to unplug when you exchange parts, teardown, inserting or removing the connector.

b. Make sure to work for repair after following actions when you touch main circuit board(each board) as 半 semiconductor(ex. IC) is static-sensitive.

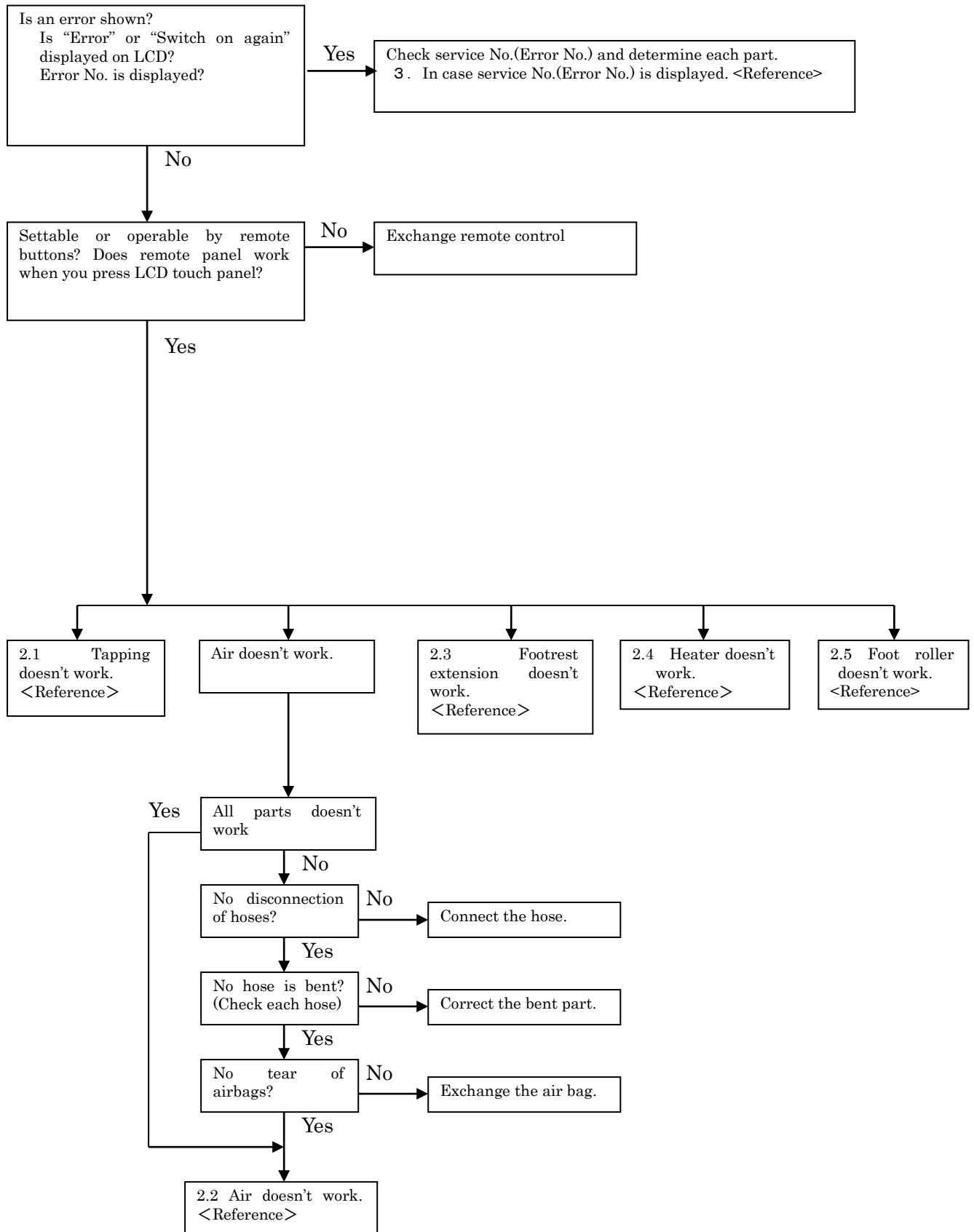
*Remove earth grounding or touch an earth(ex. Refrigerator, washing machine) directory by hand and release the static from electrically charged body.

c. Do not touch power supply board(including heat slinger) without discretion as high(AC100V-240V) and low(24V, 12V, 5V) pressure are mixed in the power supply board. It may cause electric shocks. Please be very careful with checking voltage.

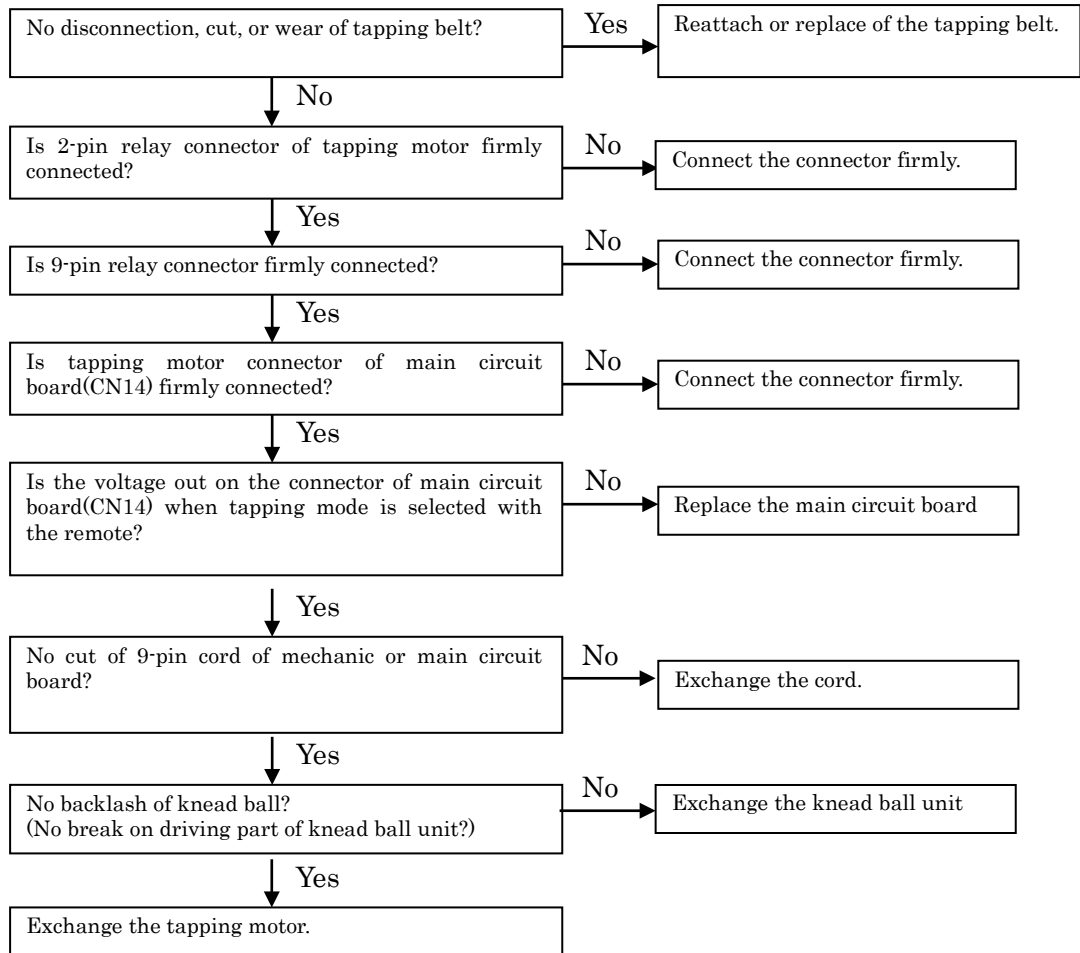
1. Power does not turn on. (LCD display does not light up)



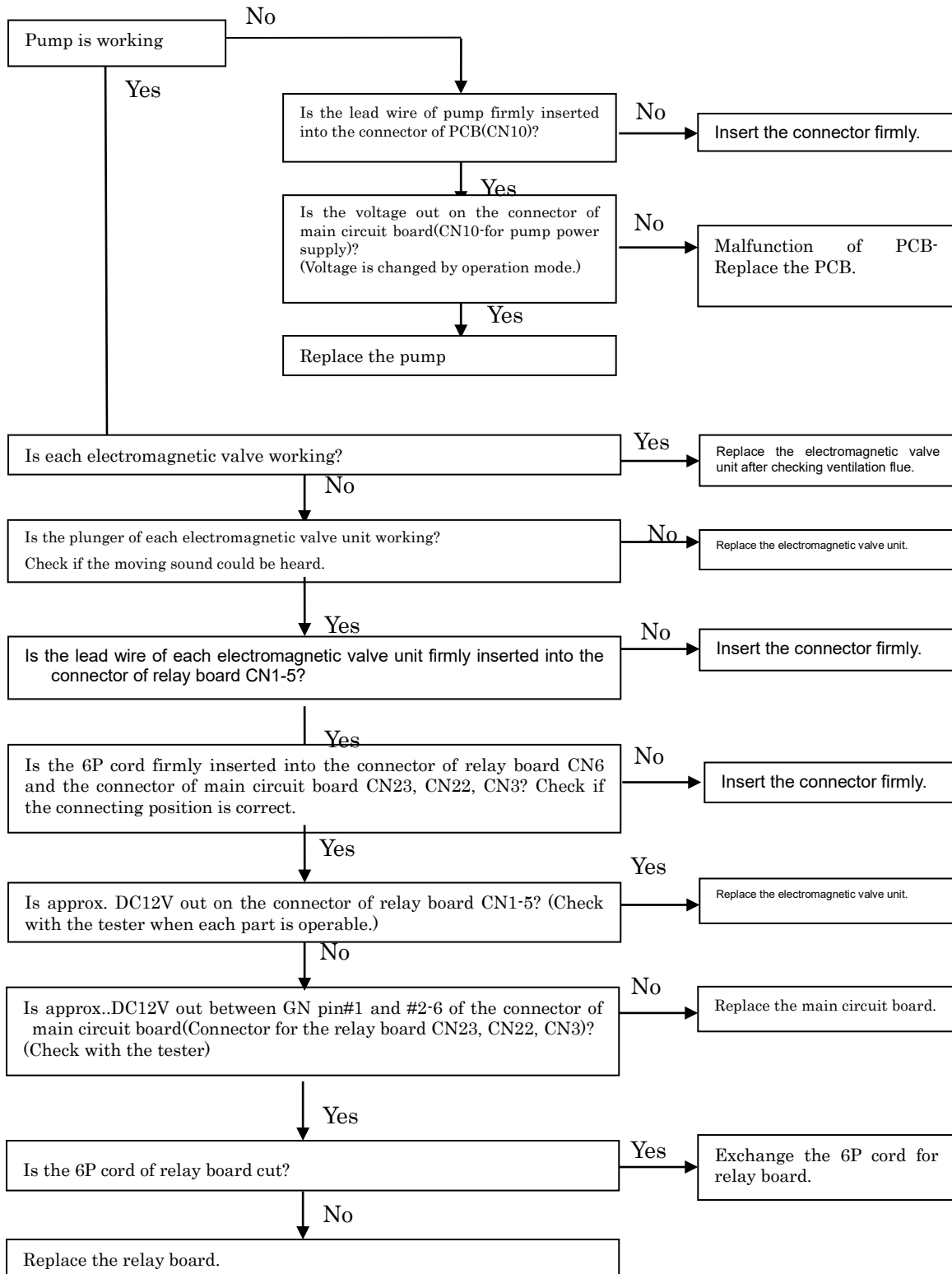
2. Does not operate normally. (LCD is lighted up)



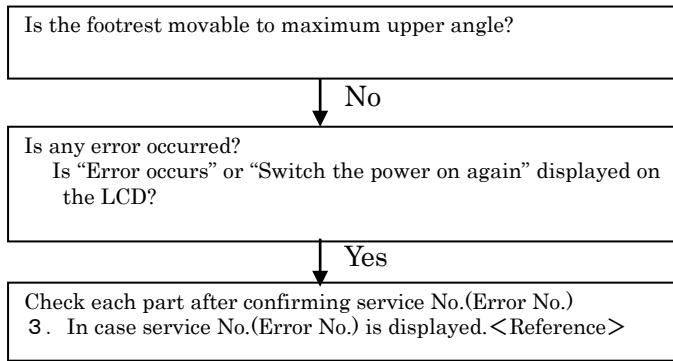
2. 1 Tapping doesn't work.



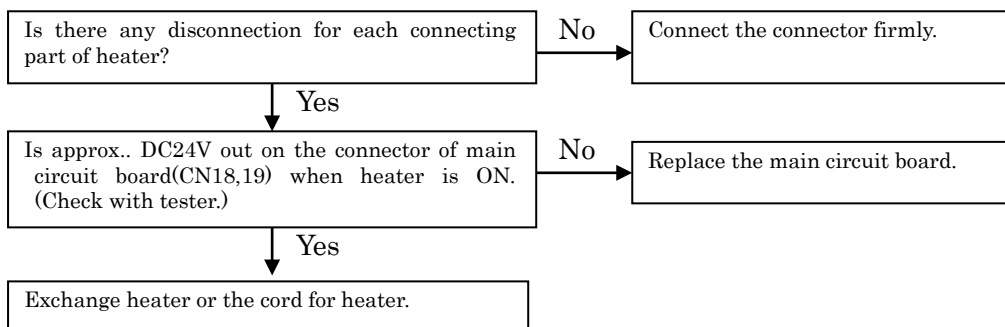
2. 2 Air function doesn't work



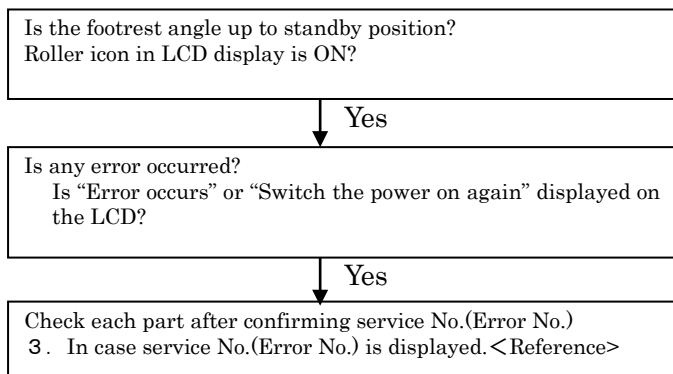
2. 3 Extension and contraction of footrest don't move.



2. 4 Heater doesn't work.



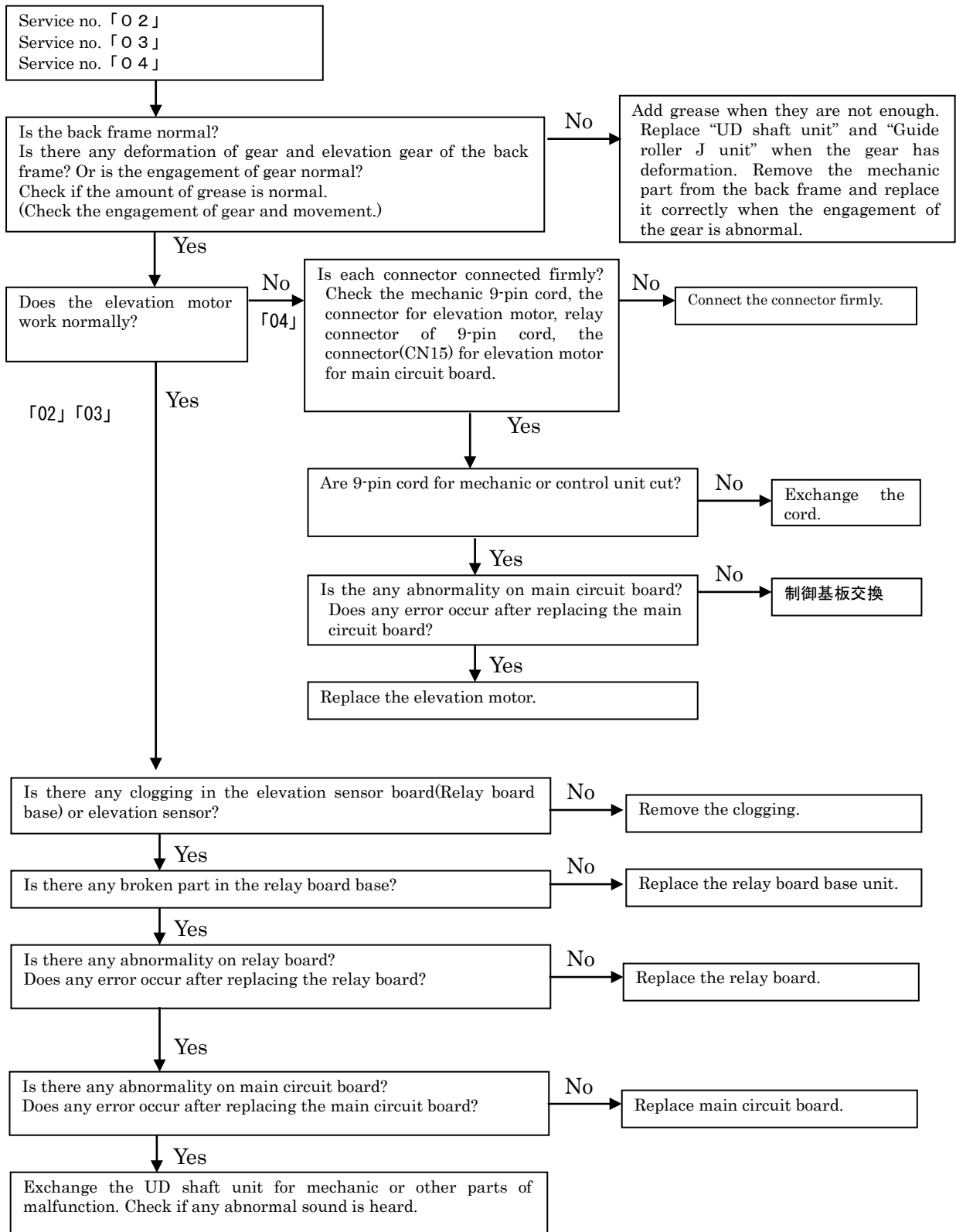
2. 5 Foot roller doesn't work.

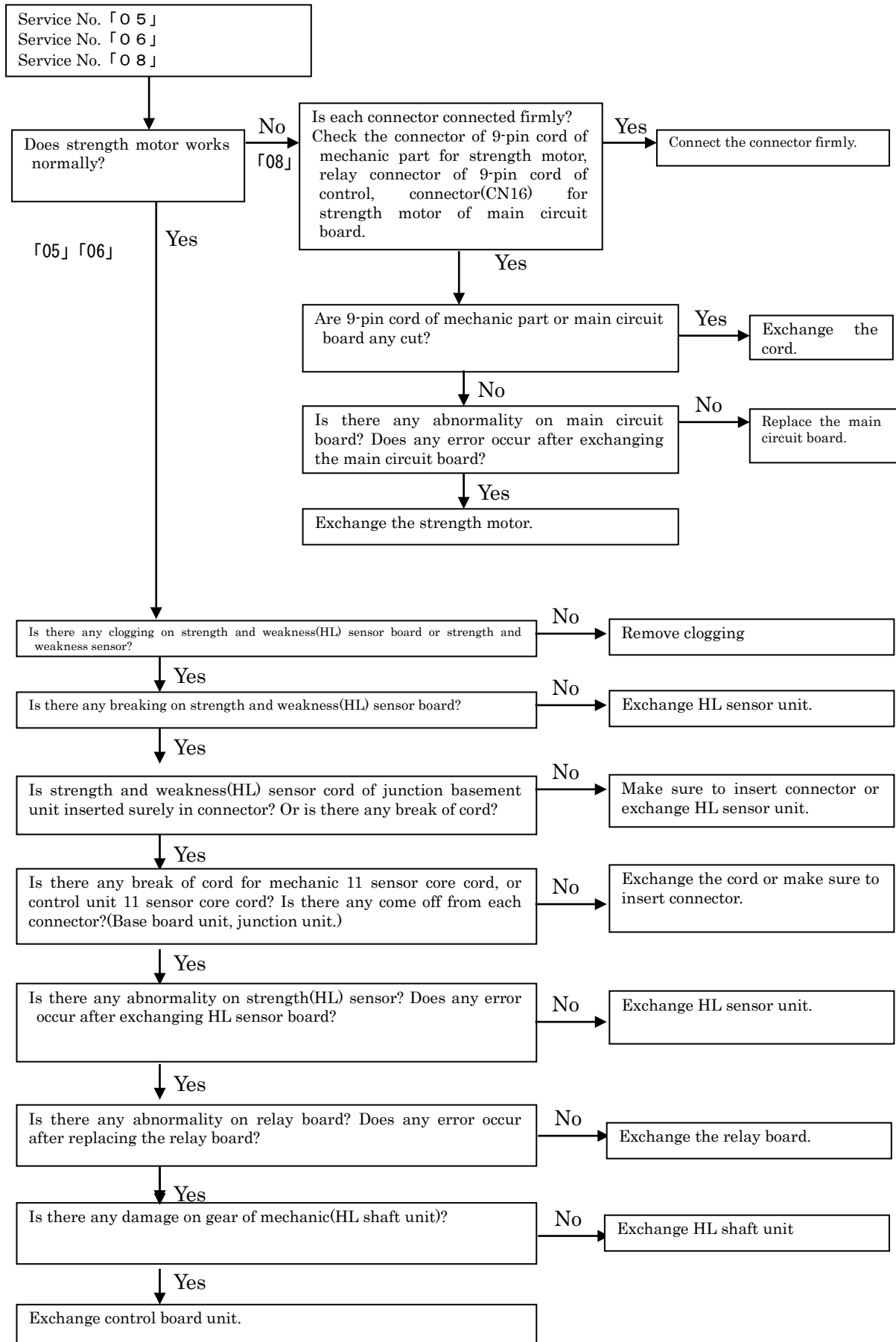


3. When an error occurs.

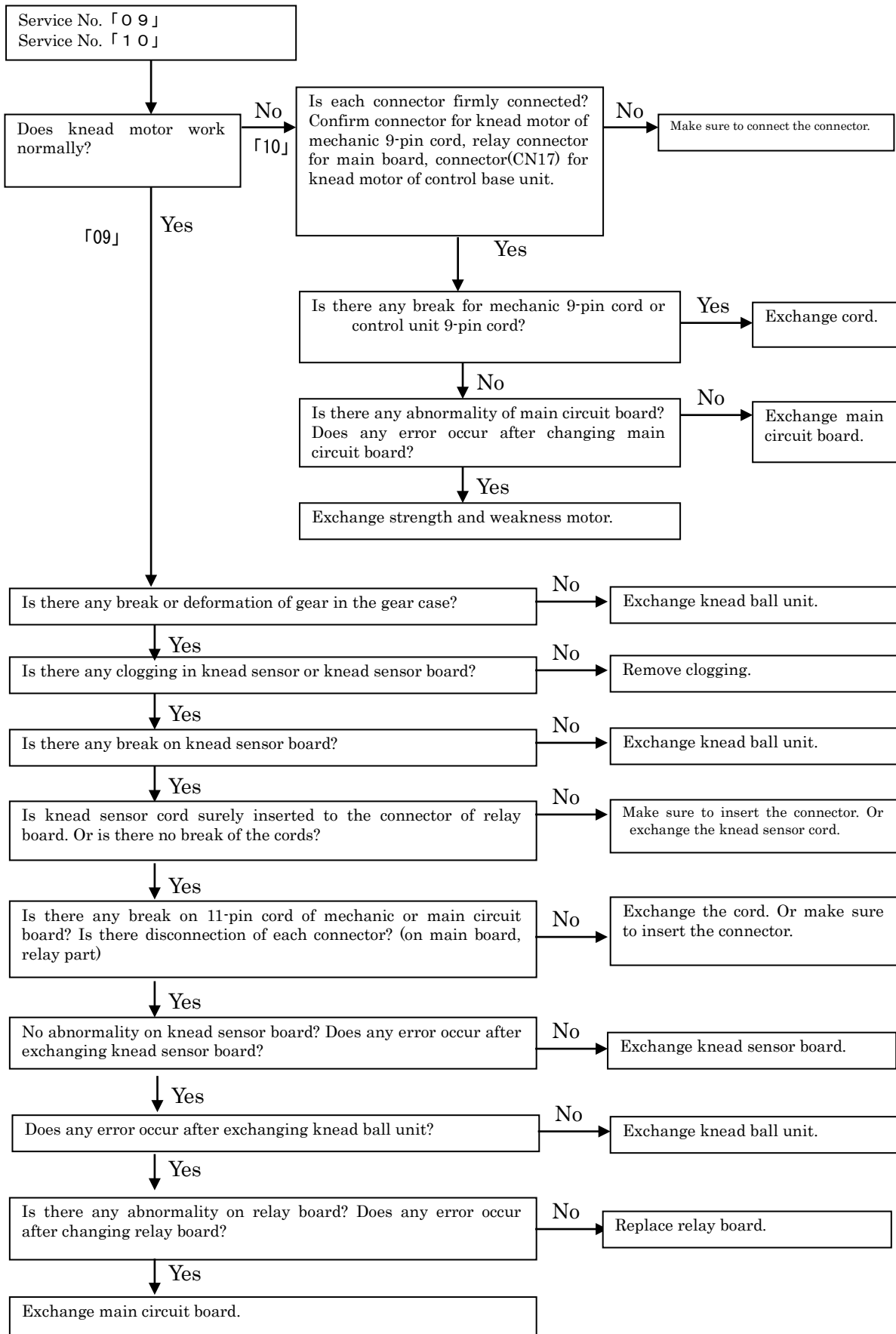
Check service No.(Error No.) from the LCD of remote control.

3.1

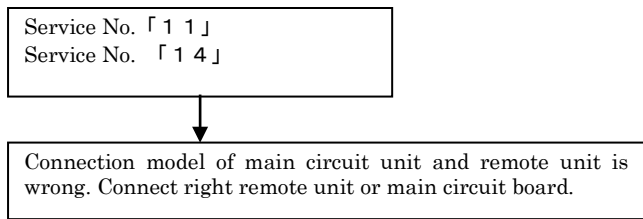




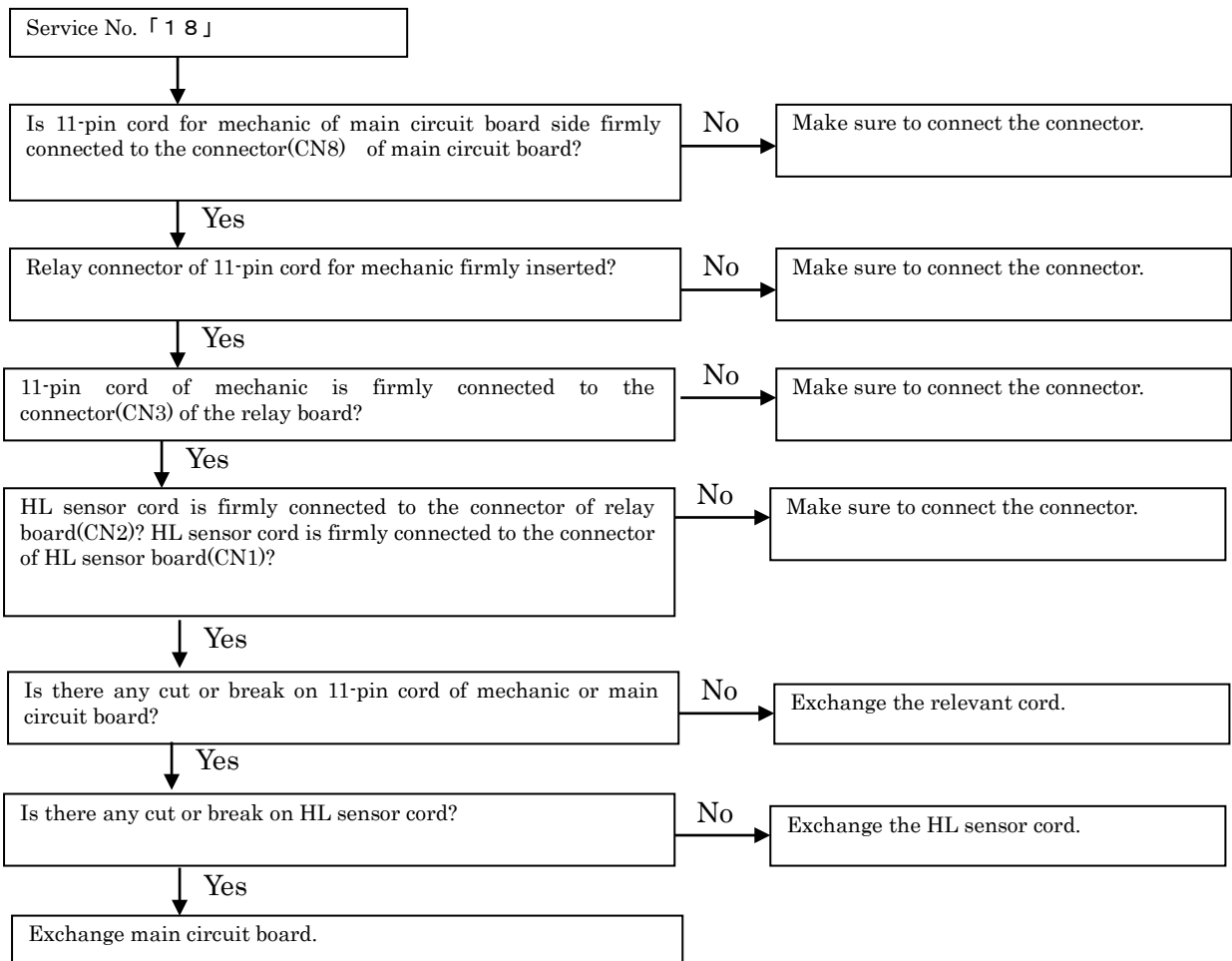
3.3



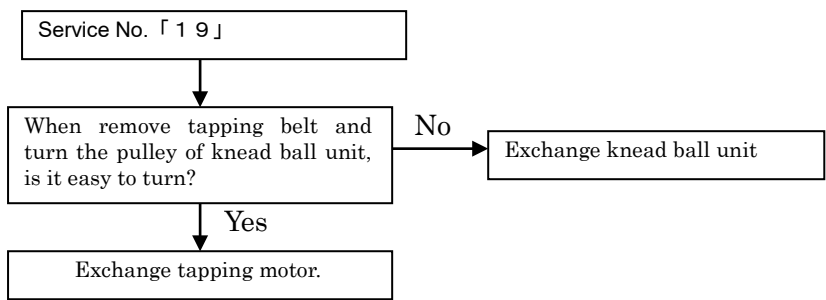
3.4



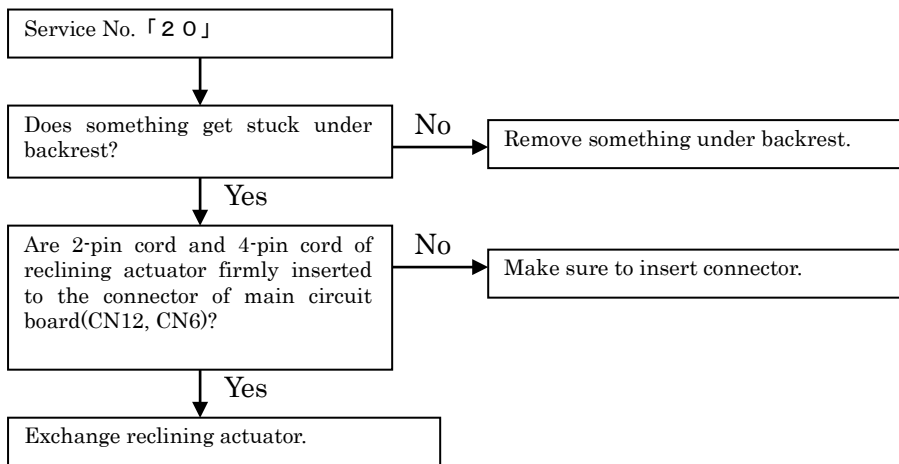
3.5



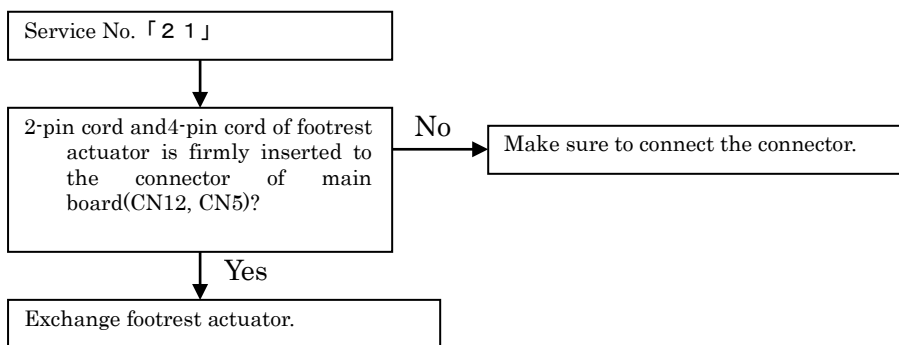
3.6



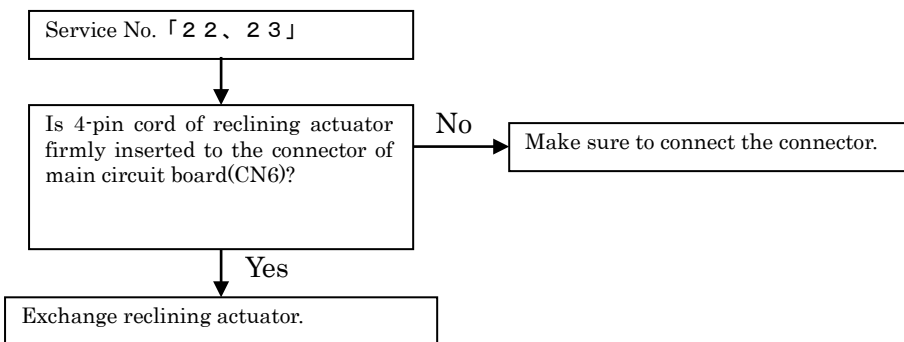
3.7



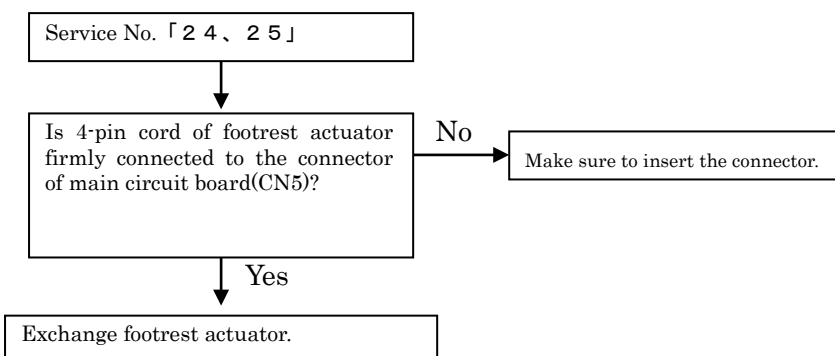
3.8



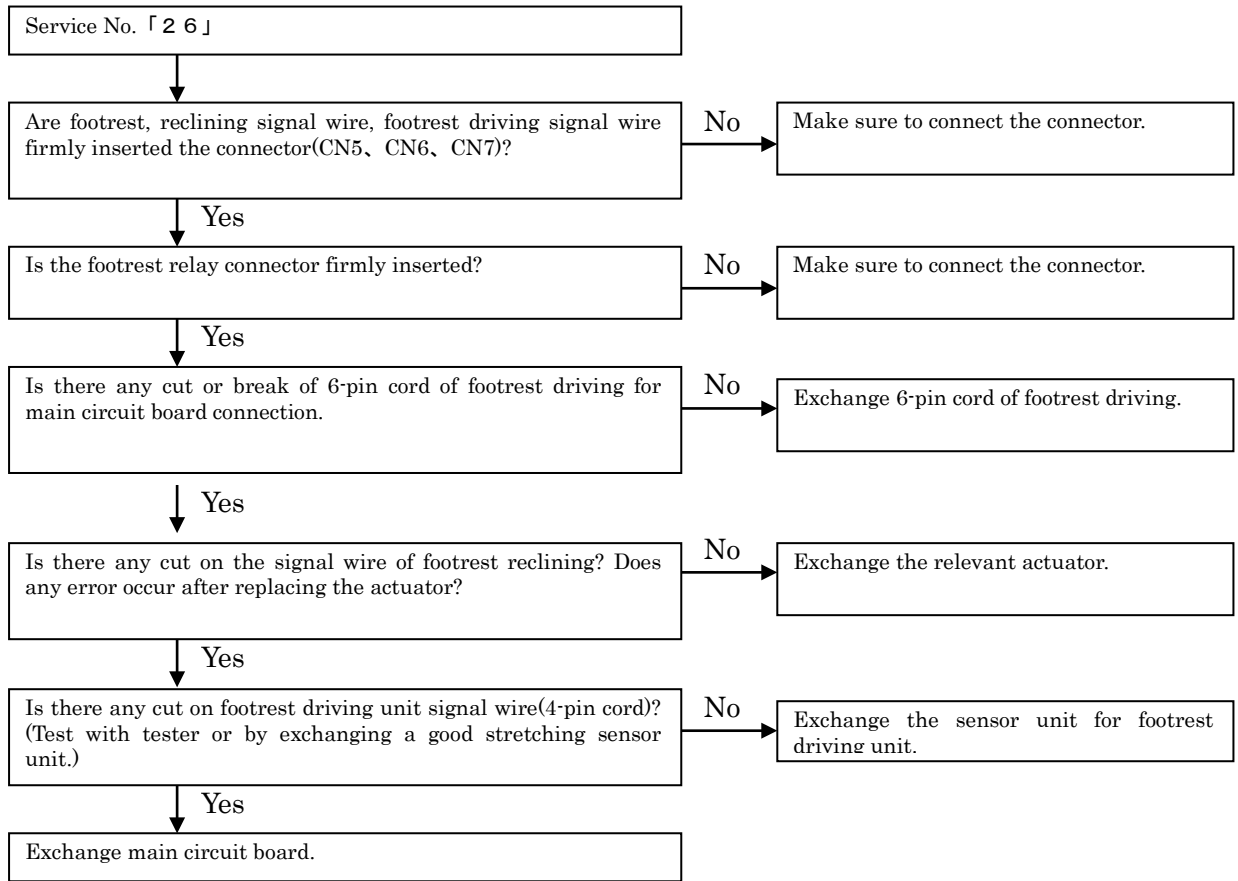
3.9



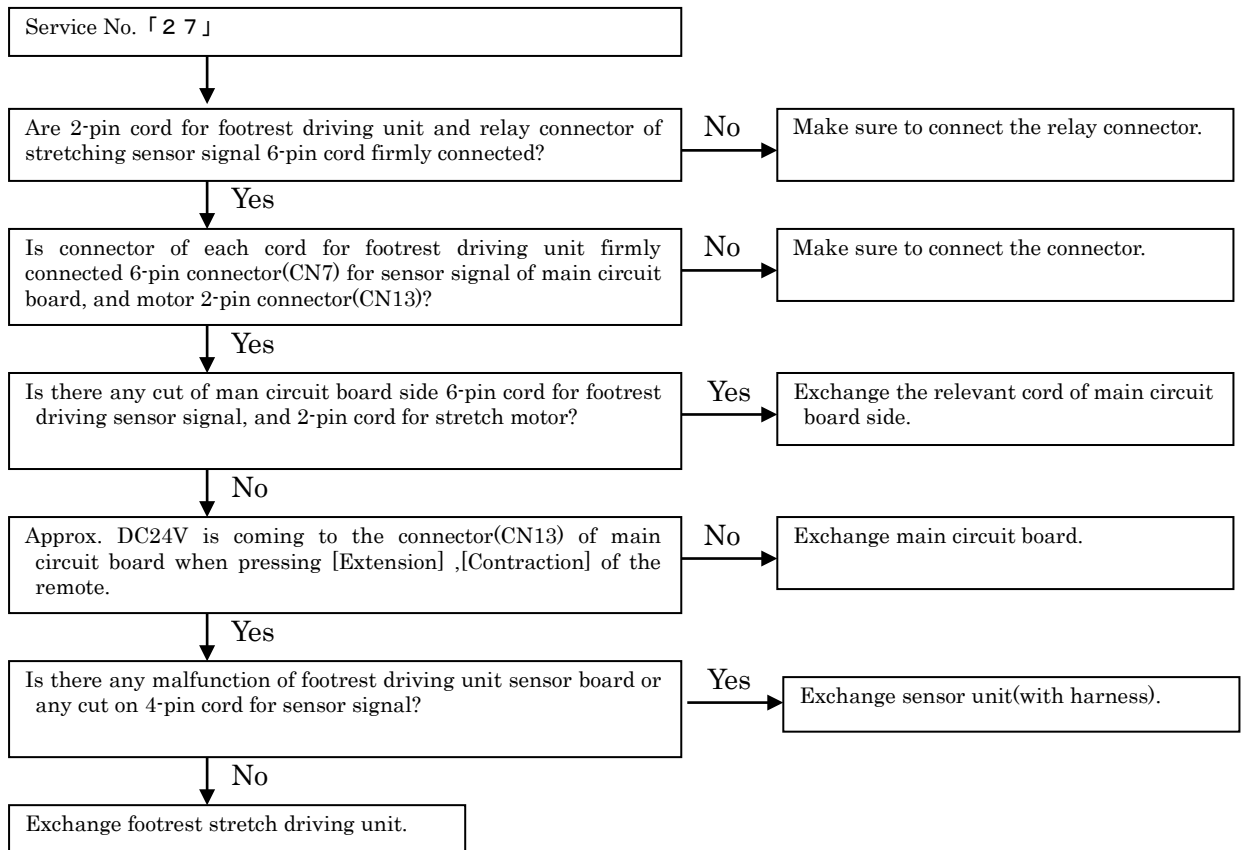
3.10



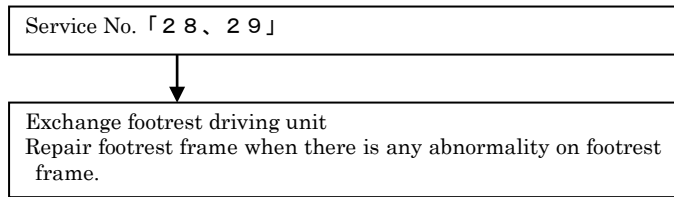
3.11



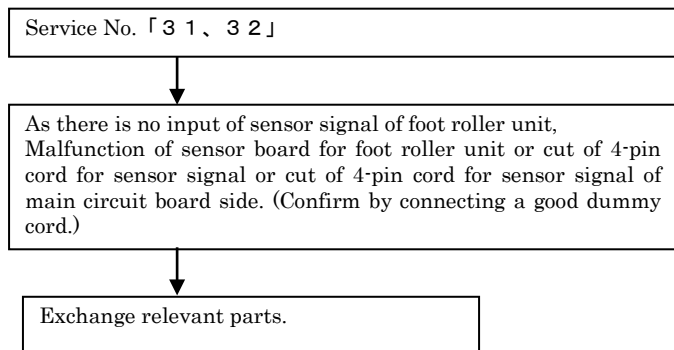
3.12



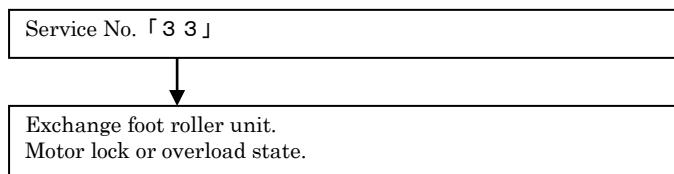
3.13



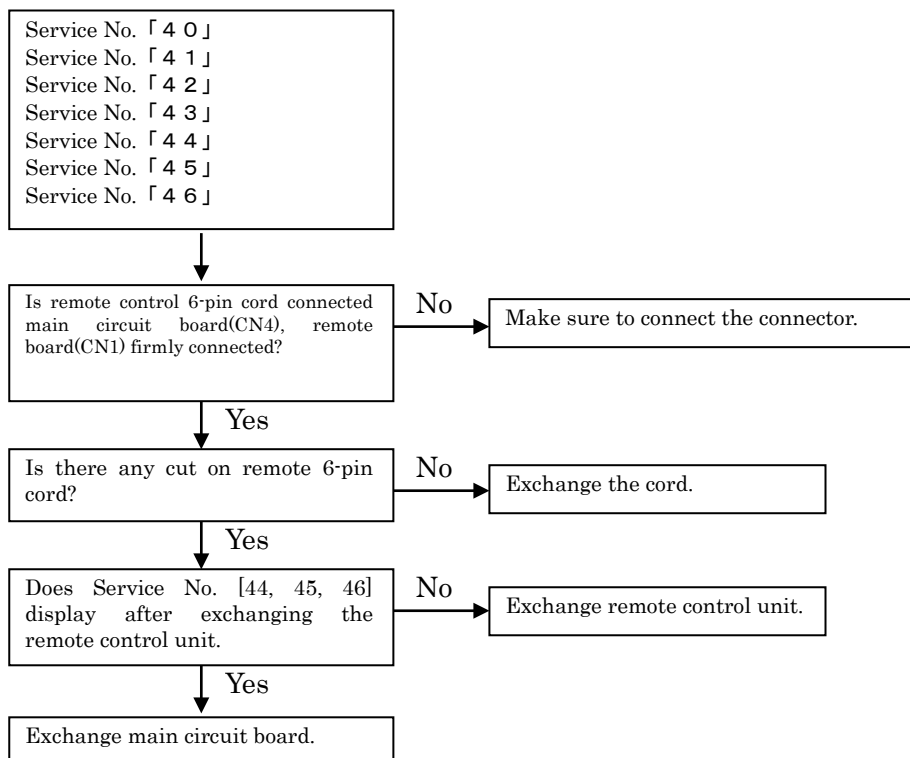
3.14



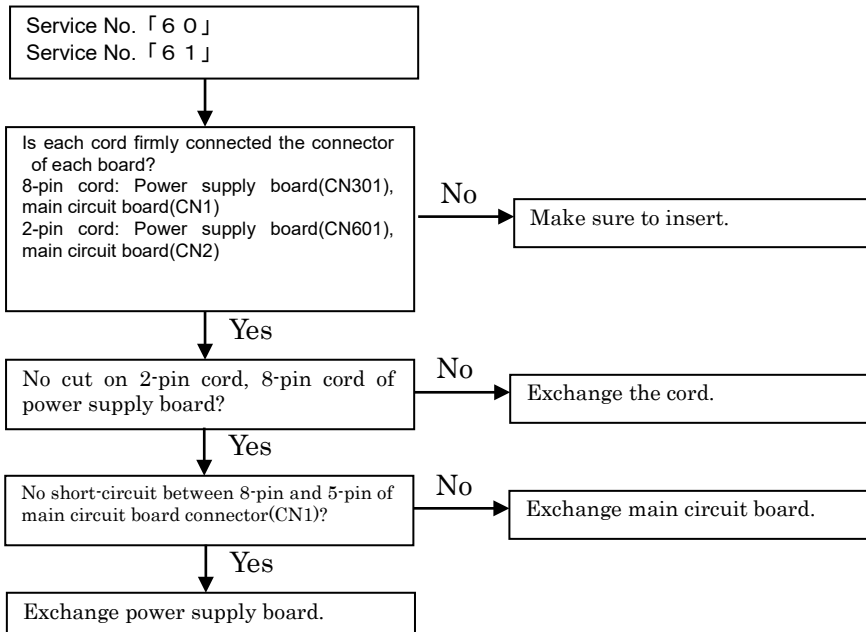
3.15



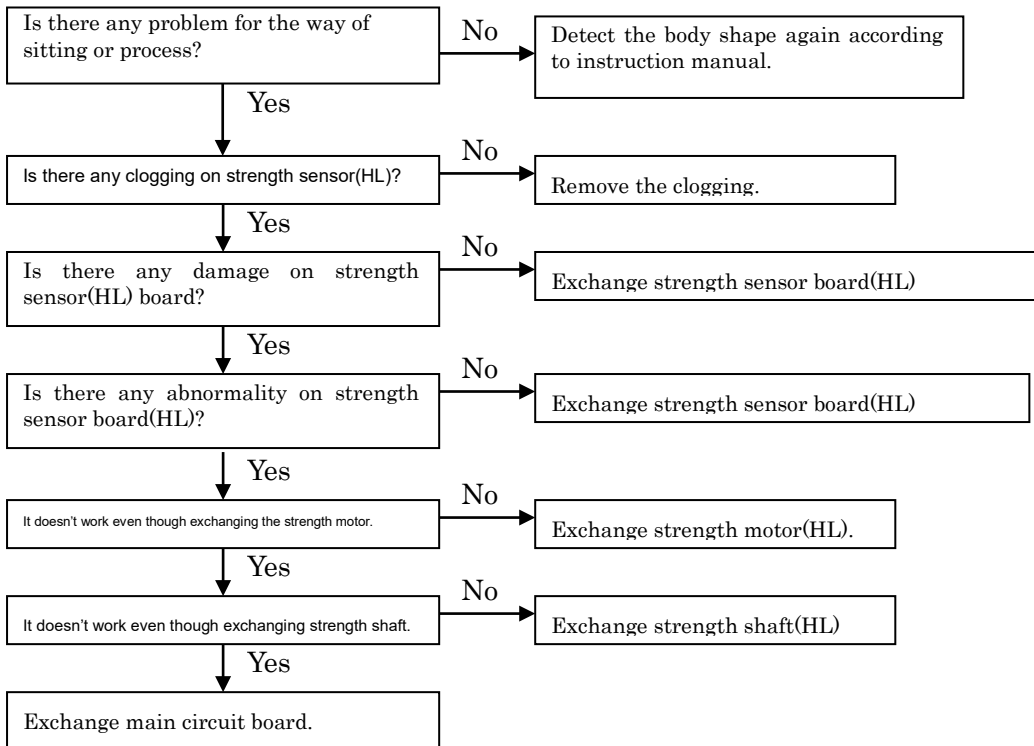
3.16



3.17



4. Body shape detection doesn't work properly.



■Error No. List (JP-1100)

Chart Error contents

Error No.	Error contents
2	Limit sensor signal is not on for more than 42 seconds during moving up.
3	Lower limit stop sensor signal is not on for more than 42 seconds during moving down.
4	In case elevation pulse is not entered for more than 3 seconds during elevating operation.
5	Malfunction of weak position sensor(weak signal is not off for more than 6 seconds during moving to "strong" direction)
6	Malfunction of weak position sensor(weak signal is not off for more than 6 seconds during moving to "weak" direction)
8	In case Strong/Weak pulse is not entered for more than 1 second during strength operation.
9	In case 「Wide」 position pulse is not entered for more than 25 seconds during kneading operation.
10	In case Knead pulse is not entered for more than 2 seconds during kneading operation.
11	Equipment error(from the main board)
14	Equipment error(from remote control)
18	Disconnection of connector is continuously detected for 0.5 seconds.
19	Tapping motor lock signal is continuously on for 2 seconds.
20	In case reclining pulse is not entered for more than 2 seconds during reclining operation.
21	In case footrest pulse is not entered for more than 2 seconds during footrest operation.
22	In case reclining limit signal is not entered for more than 30 seconds during reclining up operation.
23	In case reclining limit signal is not entered for more than 30 seconds during reclining down operation.
24	In case footrest limit signal is not entered for more than 30 seconds during footrest up operation.
25	In case footrest limit signal is not entered for more than 30 seconds during footrest down operation.
26	Disconnection of actuator connector is detected for 0.5 seconds.
27	In case footrest expansion and contraction pulse is not entered for more than 2 seconds during footrest expansion and contraction operation.
28	In case limit signal is not entered for more than 15 seconds during footrest expansion operation.
29	In case limit signal is not entered for more than 15 seconds during footrest contraction operation.
30	
31	Foot roller pulse signal is not entered for over 2 seconds while foot roller operation.
32	Foot roller position signal is not entered over 10 seconds while foot roller operation.
33	Foot roller overload is detected while foot roller is storing.
40	Main circuit board : CRC does not match for 1 second in a row.
41	Main circuit board : header does not match for 1 second in a row.
42	Main circuit board : remote control is in busy state for 1 second in a row.
43	Main circuit board : It does not receive a data from remote control for 1 second in a row.
44	Remote control : CRC does not match for 1 second in a row.
45	Remote control : header does not match for 1 second in a row.
46	Remote control : It does not have signal communication process for 1 second in a row.
60	Main circuit board : power outlet 24V become below 20V after 0.5 second pass from power on with 24V.
61	Main circuit board : power outlet 24V become below 12V for 0.1 second in a row.